

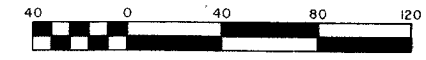
KEY MAP
NOT TO SCALE

CASTELLINA

LYING IN SECTION 13, TOWNSHIP 44 SOUTH, RANGE 41 EAST, VILLAGE OF WELLINGTON,
PALM BEACH COUNTY, FLORIDA. BEING A REPLAT OF A PORTION OF LANIER PROPERTY AS
RECORDED IN PLAT BOOK 108, PAGES 75 THROUGH 91, PUBLIC RECORDS OF PALM BEACH
COUNTY, FLORIDA.

SHEET 7 OF 17

FEBRUARY, 2012



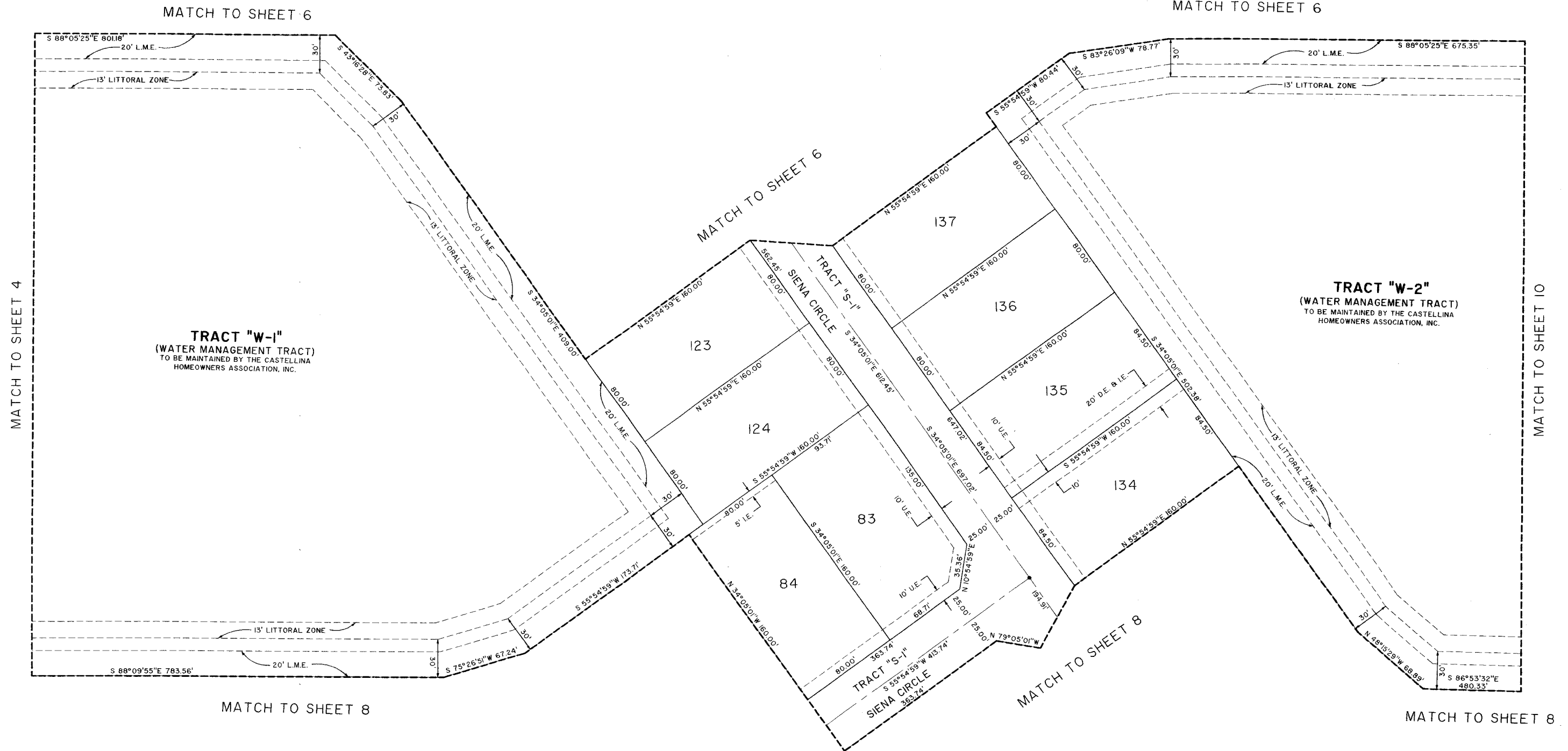
Scale 1" = 40'

COUNTY OF PALM BEACH)
STATE OF FLORIDA) SS

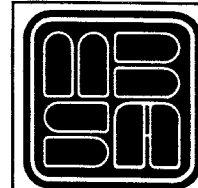
THIS PLAT WAS FILED FOR RECORD
AT _____ M. THIS
DAY OF _____, 2012, AND
DULY RECORDED IN PLAT BOOK NO.
_____, ON PAGE _____ THRU

SHARON R. BOCK,
CLERK AND COMPTROLLER

BY: _____, D.C.



SHEET 7 OF 17



**MICHAEL B. SCHORAH
& ASSOCIATES, INC.**
1850 FOREST HILL BLVD., SUITE 206
WEST PALM BEACH, FLORIDA 33406
EB# 2438 TEL. (561) 968-0080 FAX. (561) 642-9726 LB# 2438

CASTELLINA